

Issues in a crowded environment?

Noise from other devices?

Ever increasing demands for wireless communications results in pressure on **noise** and **electromagnetic smog resistance** on equipment used. An antenna site becoming overcrowded with devices, only makes the problem worse. Only a **very high quality device** with **extreme interference immunity** will provide an **acceptable solution!**

Enter **RAy** microwave links from RACOM, professionally designed and built to operate efficiently under such demanding conditions. **Exceptional system gain** and **resistance to disturbances** maximizes signal strength and reliability, making RAY the product of choice for links on busy sites.

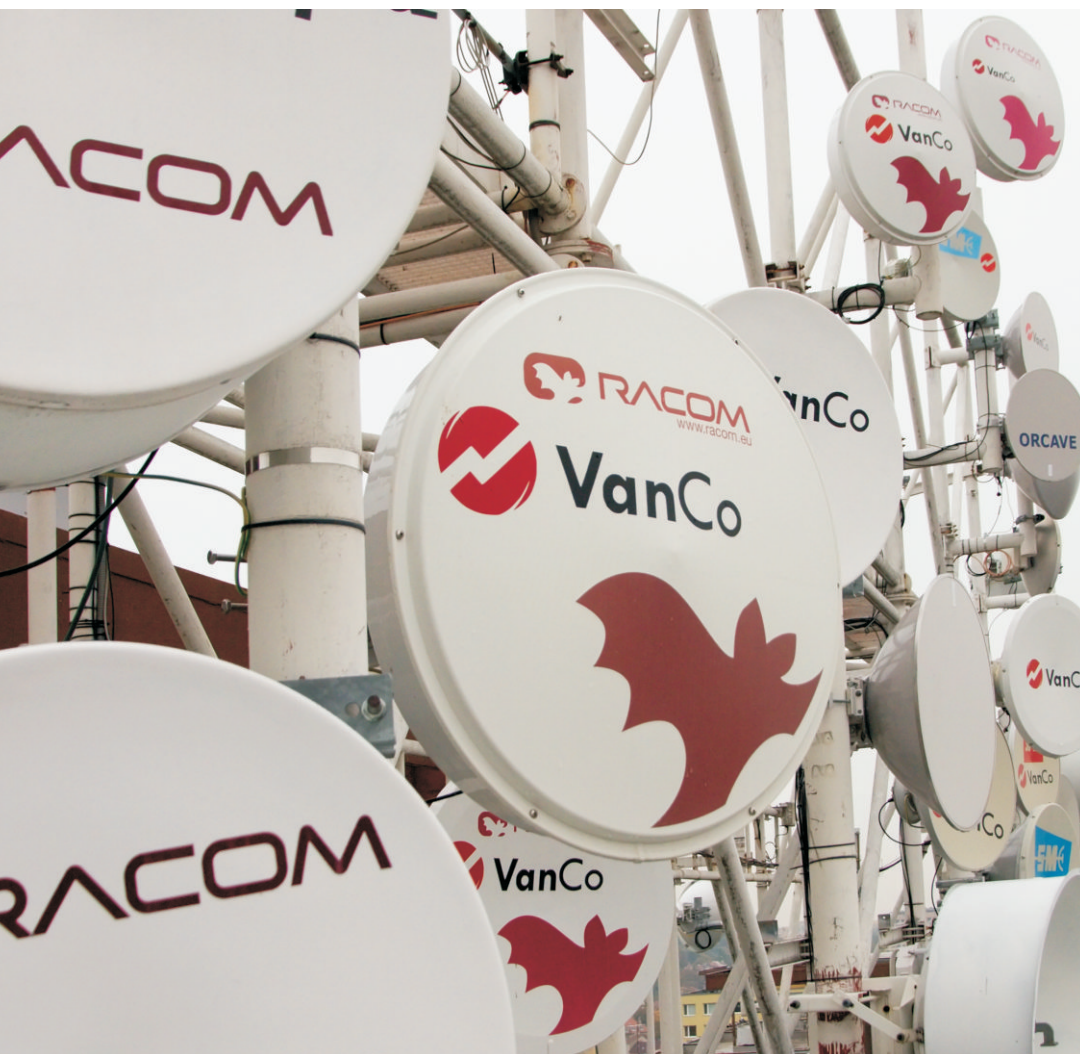


Microwave link

- FREE & licensed bands
- Interference & obstacle tolerant
- Maximum distances & reliability
- Narrow channels from 1.75 MHz
- ACM, ATPC
- Optical + metallic Ethernet
- IPTV optimized
- PoE or DC (20 - 60 V)
- Low power consumption
- Climate chamber tested

Applications

- LAN Extension
- Internet providers
- SCADA

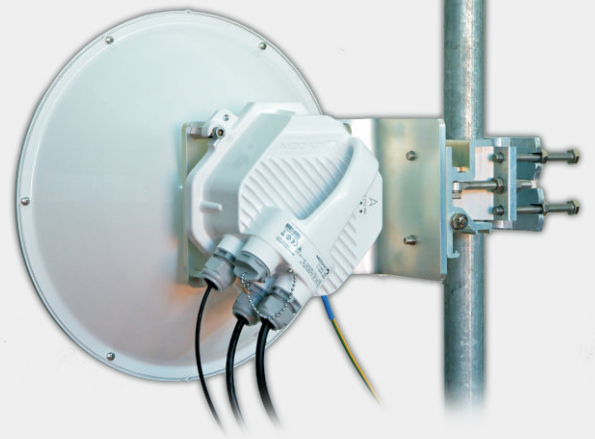


Customer benefits

- More devices on POP sites
- Smaller antennas
- High reliability, even in a noisy environment
- More devices within the same space

Technical Features

- Max. sensitivity while exceptional resistance
- Narrow channels from 1.75MHz
- Link availability 99.999% in harsh environment
- Wide range of Automatic Transmit Power Control
- Extreme reliability of the equipment (MTBF > 100 years)
- Built-in spectrum analyzer for free channel searching



VanCo s.r.o., Czech Republic

VanCo supplies many networks using various technologies in the Czech Telecommunications market.

Their customers, like UPC, find RAY to be an ideal product for real-life error-free reliable operation even on their busiest sites. This allows them to offer high levels of service and availability to their customers at minimal operating costs.

“Due to its very efficient usage of the spectrum, RAY allows us to increase the number of links we can operate even on the busiest of sites, resulting in a clear economic benefit. Our most demanding sites are nearly all populated with RACOM RAY equipment.”

David Němec
Sales Director at VanCo s.r.o. Czech Republic

Data Pro Links, Lebanon

Dataprolinks, a leading ISP in Lebanon, prefers using RAY on sites where there is an abundance of other devices.

They find that no other product has stood the test of frequency resilience quite like the RAY. It is the only device able to work reliably with so much interference around it.

“You should try the RAY from RACOM. If it doesn’t manage your site conditions and provide the solution you have been looking for, nothing else will!”

Bassel Nasr Eddine
Head of Telecommunications at Data Pro Links,
Lebanon.