

# DP-024

Ordering number 8595090516040

## compact construction

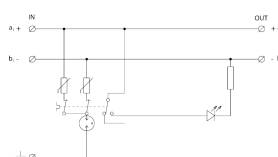
Protection of equipment connected to installation of DC and AC supply voltage.  
Installation at the boundary of LPZ 1 and LPZ 2 zones or higher.



### Dimension drawing



### Basic circuit diagram



## Technical specifications

Type of SPD		T3, C2
Connection (input - output)		terminals-terminals
Location of SPD		ST 2
Nominal voltage	$U_n$	24 V AC
Maximum operating voltage	$U_c$	34,00 V AC
Maximum operating voltage	$U_c$	44,00 V DC
Nominal load current	$I_L$	16,000 A
C2 nominal discharge current (8/20 $\mu$ s) per core	$I_n$	2,00 kA
C2 voltage protection level mode core-core at In	$U_p$	200 V
C2 voltage protection level mode core-PE at In	$U_p$	530 V
Nominal discharge current (8/20 $\mu$ s) a-b	$I_n$	2 000,00 A
Nominal discharge current (8/20 $\mu$ s) a(b)-PE	$I_n$	2 000,00 A
Test voltage a-b	$U_{oc}$	4,0 kV
Test voltage a(b)-PE	$U_{oc}$	4,0 kV
voltage protection level a-b	$U_p$	0,20 kV
voltage protection level a(b)-PE	$U_p$	0,53 kV
Maximum overcurrent protection		16 A gL/gG or C 16 A
Response time a-b	$t_a$	25 ns
Response time a(b)-PE	$t_a$	100 ns
Cross-section of connected conductors solid (max)		4,00 mm <sup>2</sup>
Cross-section of connected conductors stranded (max)		2,50 mm <sup>2</sup>
Fault indication		red indicator
Degree of protection		IP 20
Range of operating temperatures - min		-40 °C
Range of operating temperatures - max		80 °C
Mounting		DIN rail 35 mm
According to standard	EN 61643-21+A1,A2:2013, IEC 61643-21+A1,A2:2012, EN 61643-11:2012, IEC 61643-11:2011	
ETIM Class		EC000942